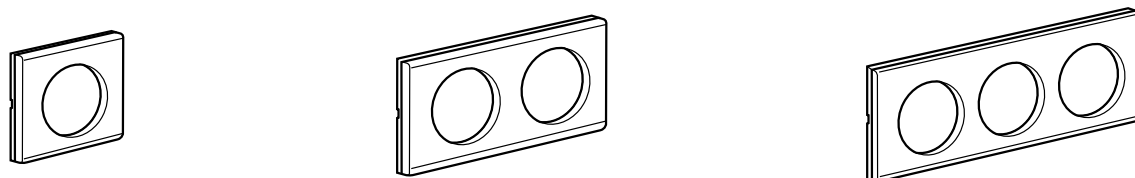


**Céliane™**  
**Glass-finish plates**

Cat. No(s): **693 01/02/03/04/05/07**  
**693 11/12/13/14/15/17**  
**693 41/42/43/44/45/47**



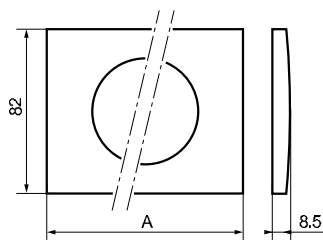
**1. GENERAL CHARACTERISTICS**

Frame plates for fitting on mechanisms, 1 to 4-gang

**2. RANGE**

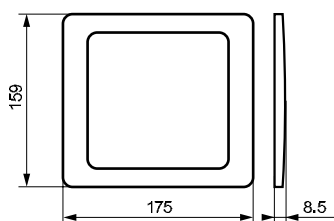
Description		1-gang	2-gang	3-gang	4-gang	4 x 5 module	Special plate
Glass finish	Plate Graphite colour	693 01	693 02	693 03	693 04	693 05	693 07
	Plate Kaolin colour	693 11	693 12	693 13	693 14	693 15	693 17
	Plate Titanium colour	693 41	693 42	693 43	693 44	693 45	693 47
	Weight (g)	67.6	107.7	146.3	185.2	89.8	219.7

**3. OVERALL DIMENSIONS**



Cat. No(s)	A (mm)
693 01/11/41	100
693 02/12/42	170
693 03/13/43	242.5
693 04/14/44	313
693 05/15/45	170

Cat. No(s)  
693 07/17/47



**4. MOUNTING**

The plates are clipped via notches to screw-type or claw-type supports (the notches are used to compensate for the thickness. Example: wall carpet). Easy to remove with a screwdriver using the slots on the side of the plate.

**5. TECHNICAL DATA**

**5.1 Mechanical characteristics**  
Impact tests: IK 04

**5.2 Material characteristics**  
Material: glass + polycarbonate  
Self-extinguishing: 650°C/30 s

**5.3 Climatic characteristics**  
Storage temperatures: -10°C to +70°C  
Operating temperatures: -5°C to +50°C

**6. CLEANING**

To be cleaned with water only.

**7. SPECIAL USE**

The plates must not be painted.