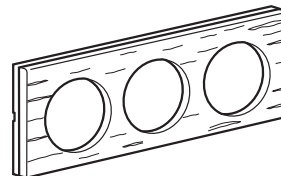
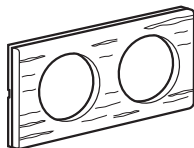


Céliane™ Wood-finish plates

Cat. No(s): 692 01/02/03/04/05/07/08/09/11/12/13/14/15
692 17/18/19/21/22/23/24/25/27/28/29/31/32
692 33/34/35/37 - 691 71/72/73/74/75/77



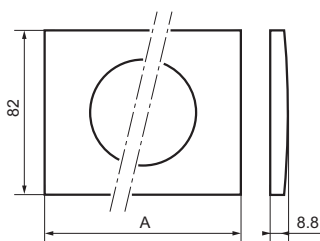
1. GENERAL CHARACTERISTICS

Plates covering 1- to 4-gang mechanisms.

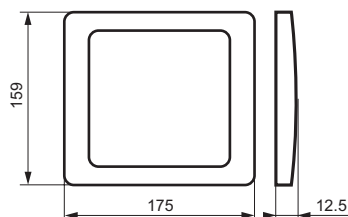
2. RANGE

Designation		1-gang	2-gang	3-gang	4-gang	4/5 module plate	Special for renovation		Special plate
							2-gang centre distance 57 mm	3-gang centre distance 57 mm	
Wood finish	Maple Materials plate	692 11	692 12	692 13	692 14	692 15	692 18	692 19	692 17
	Mahogany Materials plate	692 21	692 22	692 23	692 24	692 25	692 28	692 29	692 27
	Wenge-coloured Materials plate	692 01	692 02	690 03	692 04	692 05	692 08	692 09-	692 07
	Oak Materials plate	692 31	692 32	692 33	692 34	692 35	-	-	692 37
	Cedar Materials plate	691 71	691 72	691 73	691 74	691 75	-	-	691 77
	Weight (g)	24	38	51	61	32	36	43	84

3. OVERALL DIMENSIONS



Cat. Nos	A (mm)
692 01/11/21/31 - 691 71	100
692 02/12/22/32 - 691 72	171
692 03/13/23/33 - 691 73	242
692 04/14/24/34 - 691 74	313
692 05/15/25/35 - 691 75	171
692 08/18/28	157
692 09/19/29	214



Cat. Nos
692 07/17/27/37
691 77

4. MOUNTING

The plates snap onto the screw-type or claw-type support frames: notches allow adjustment to compensate for thickness differences (example: wall carpeting). Easy to remove using a screwdriver via the slots on the side of the plate.

5. TECHNICAL DATA

5.1 Mechanical characteristics

Impact resistance: IK 04

5.2 Material characteristics

Materials: wood & polycarbonate

Self-extinguishing: 650 °C / 30 s.

5.3 Climatic characteristics

Storage temperature: - 10 °C to +70 °C

Operating temperature: - 5 °C to +50 °C

6. CLEANING

No cleaning

7. SPECIAL USE

Paint must not be applied to the plates.

